

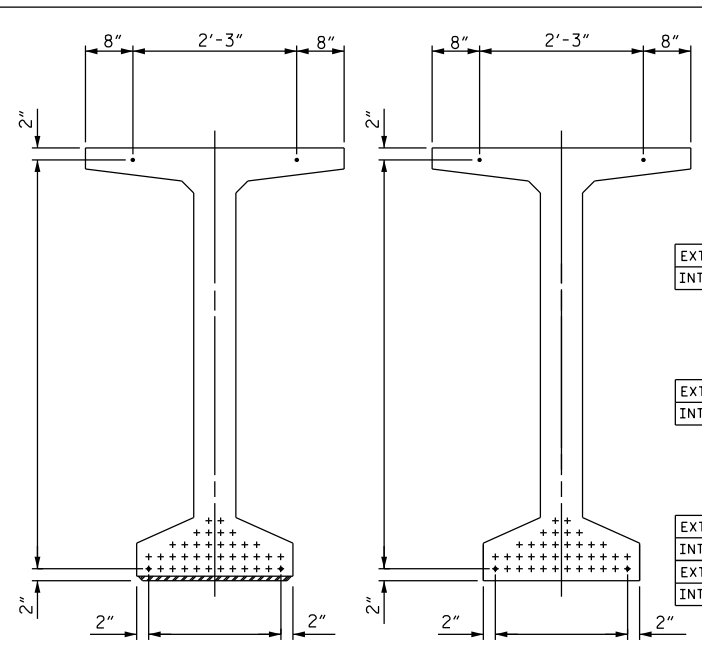
CL 1/2" Ø FORMED HOLE. SEE ELEVATION FOR LOCATION. FOR DIM. "A", "B" & "C" SEE "INTERMEDIATE STEEL DIAPHRAGMS" SHEET.)

DEBONDING LEGEND

- FULLY BONDED STRANDS
- STRANDS DEBONDED FOR 4'-0" FROM END OF GIRDER
- STRANDS DEBONDED FOR 6'-0" FROM END OF GIRDER
- STRANDS DEBONDED FOR 8'-0" FROM END OF GIRDER
- STRANDS DEBONDED FOR 10'-0" FROM END OF GIRDER
- STRANDS DEBONDED FOR 12'-0" FROM END OF GIRDER

FOR S7 BARS. SEE DETAIL "C" OF PRESTRESSED CONCRETE GIRDER CONTINUOUS FOR LIVE LOAD DETAILS SHEET

(S1, S6 AND S9 BARS NOT SHOWN)



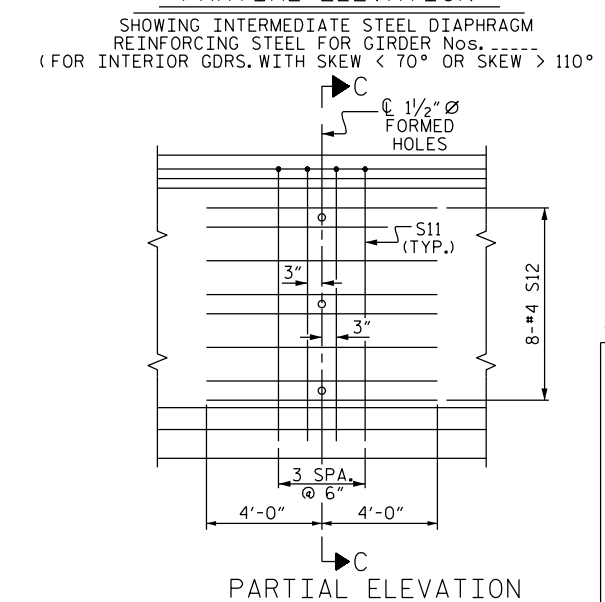
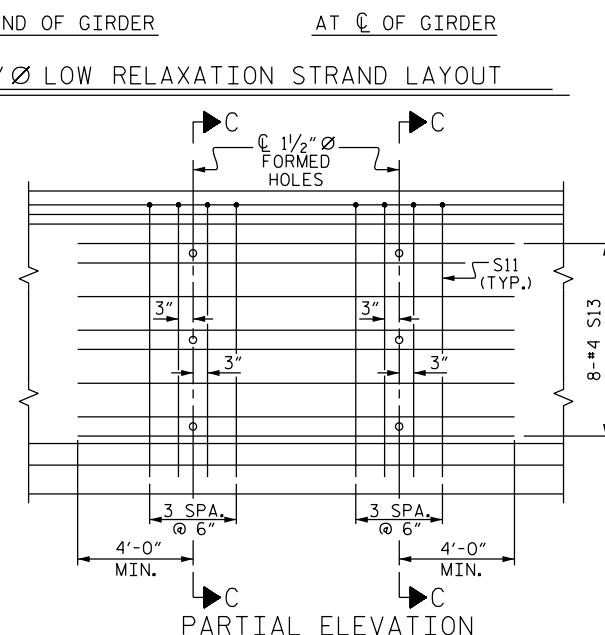
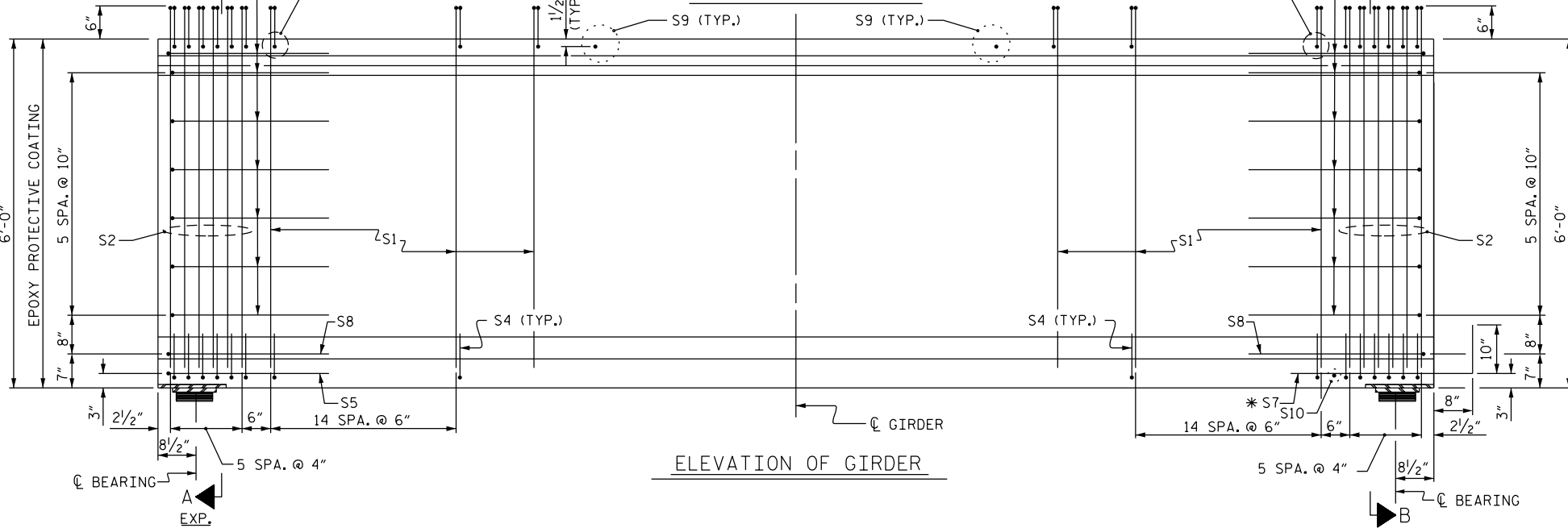
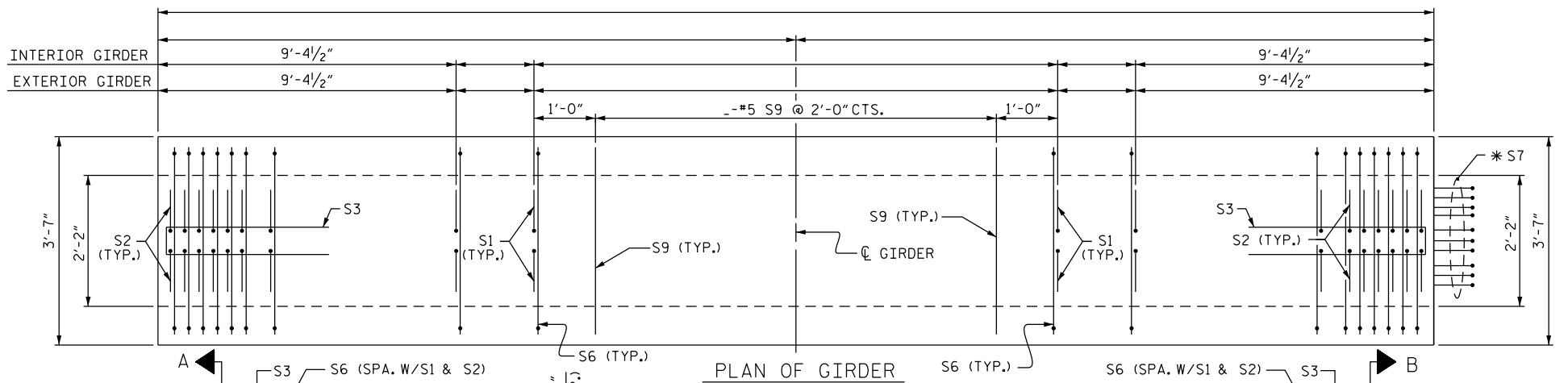
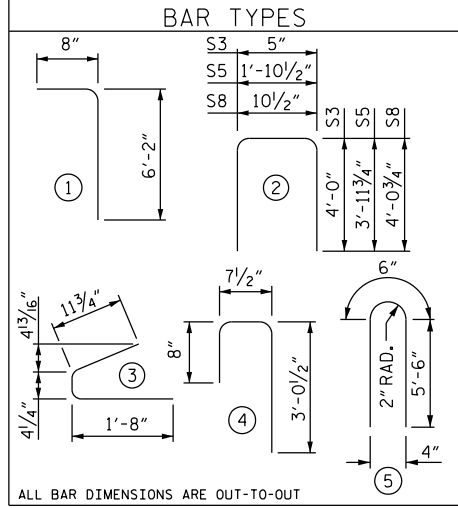
0.6" Ø L. R. GRADE 270 STRANDS

AREA (SQUARE INCHES)	ULTIMATE STRENGTH (LBS. PER STRAND)	APPLIED PRESTRESS (LBS. PER STRAND)
0.217	58,600	43,950

REINFORCING STEEL FOR ONE GDR

BAR	NUMBER	SIZE	TYPE	LENGTH	WEIGHT
EXTERIOR GDR. S1		#4	1	6'-10"	
INTERIOR GDR. S1		#4	1	6'-10"	
S2	24	#5	1	6'-10"	171
S3	14	#4	2	8'-5"	79
S4	84	#4	3	3'-0"	168
S5	1	#5	2	9'-10"	10
EXTERIOR GDR. S6		#5	4	4'-4"	
INTERIOR GDR. S6		#5	4	4'-4"	
*S7	10	#5	STR	3'-8"	38
S8	2	#5	2	9'-0"	19
S9		#5	STR	3'-3"	
S10	1	#3	STR	1'-10"	1
EXTERIOR GDR. S11		#5	5	11'-6"	
INTERIOR GDR. S11		#5	5	11'-6"	
EXTERIOR GDR. S12		#4	STR	8'-0"	
INTERIOR GDR. S		#4	STR		

* NOTE: S7 BARS SHALL BE BENT BEFORE SHIPMENT. HEAT BENDING SHALL NOT BE ALLOWED.



QUANTITIES FOR ONE GIRDER

	REINFORCING STEEL		PSI CONCRETE		0.6" Ø L.R. STRANDS	
	LB.	C.Y.			No.	
EXTERIOR GIRDER						
INTERIOR GIRDER						

GIRDERS REQUIRED

NUMBER	LENGTH	TOTAL LENGTH

PROJECT NO. _____

_____ COUNTY

STATION: _____

SHEET _ OF _

STATE OF NORTH CAROLINA
DEPARTMENT OF TRANSPORTATION
RALEIGH

STANDARD
72" PRESTRESSED CONCRETE
MODIFIED BULB TEE
CONTINUOUS FOR LIVE LOAD

REVISIONS						SHEET NO.
NO.	BY:	DATE:	NO.	BY:	DATE:	
1			3			TOTAL SHEETS
2			4			

ASSEMBLED BY : _____ DATE : _____

CHECKED BY : _____ DATE : _____

DRAWN BY : EEM 2/6/97 REV. 10/11/11 MAA/GM

CHECKED BY : VAP 2/6/97 REV. 6/13 MAA/GM

REV. 1/15 MAA/TMG

DOCUMENT NOT CONSIDERED FINAL UNLESS ALL SIGNATURES COMPLETED